



Health Check Guide for SAP® Systems 4.7 and below

Health Check Guide for SAP Customers

Macro 4's free Health Check will analyse your SAP database to identify which modules are generating the most data. It can be performed remotely by Macro 4, using non-confidential system data supplied by you.

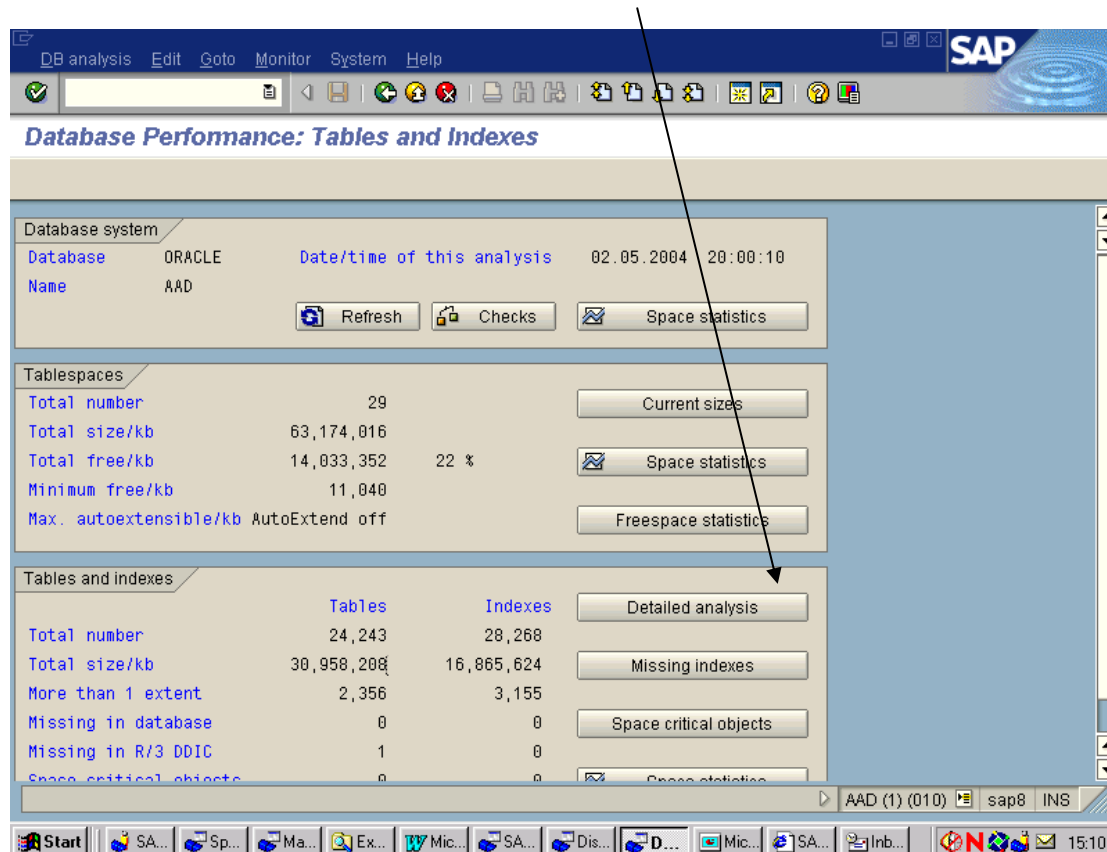
To extract the data simply follow this step-by-step guide, which will show you how to run two standard SAP transactions and export the results to two spreadsheets which can be emailed to Macro 4 for analysis.

Once we receive this information we will assess the health of your SAP database. We will then prepare a report for you, showing you where you can release storage capacity through archiving.

Step 1 – Transaction DB02

This procedure is designed to sort databases into descending order so that critical tables can be identified.

Run transaction DB02 and select “Detailed analysis”.



Enter 4000 (=4Mb) into the size box. Press the green tick to continue.

Memory Management: Tables and Indexes

Select for table/index analysis

Object name *

Tablespace *

Object type *

Size / kbyte > 4000

Extents >

with Index-Type ☐

☒ ☐

Now sort the resulting table into descending order by positioning on the first value in the Kbytes column and press the sort icon:

Database analysis Goto Monitor System Help

Tables and Indexes: Analysis

Table <-> Indexes Extents Table columns Detailed analysis History Sort

04.05.2004 15:16:42 AAD sap8 Sort (F8)

Data from DBA_SEGMENTS
(unlimited = 1-)

Owner	Object	Type	Tablespace	KBytes	Blocks	Extents	Max
SYS	OBJ\$	TABLE	SYSTEM	4,816	602	41	
SYS	CON\$	TABLE	SYSTEM	11,456	1,432	15	
SYS	VIEW\$	TABLE	SYSTEM	4,216	527	36	
SYS	SOURCE\$	TABLE	SYSTEM	16,416	2,052	83	
SYS	HIST_HEAD\$	TABLE	SYSTEM	25,656	3,207	17	
SAPR3	ZTBC_IMGRP_OP	TABLE	PSAPUSER1D	98,592	12,324	38	
SAPR3	DO105	TABLE	PSAPES46CD	1,344,200	168,025	3	
SAPR3	ABAPHTML	TABLE	PSAPSTABD	5,136	642	3	
SAPR3	ADCP	TABLE	PSAPSTABD	10,264	1,283	2	
SAPR3	ADR2	TABLE	PSAPSTABD	10,256	1,282	2	
SAPR3	ADR3	TABLE	PSAPSTABD	10,256	1,282	2	
SAPR3	ADR6	TABLE	PSAPSTABD	10,256	1,282	2	
SAPR3	ADR7	TABLE	PSAPSTABD	10,256	1,282	2	
SAPR3	ADRC	TABLE	PSAPSTABD	10,264	1,283	2	
SAPR3	ADRCOMC	TABLE	PSAPSTABD	10,256	1,282	2	

AAD (1) (010) sap8 INS

The following - sorted - screen will be displayed:

Database analysis Goto Monitor System Help

Tables and Indexes: Analysis

Table <-> Indexes Extents Table columns Detailed analysis History Sort

04.05.2004 15:18:25 AAD sap8
OBJ\$

Data from DBA_SEGMENTS
(unlimited = 1-)

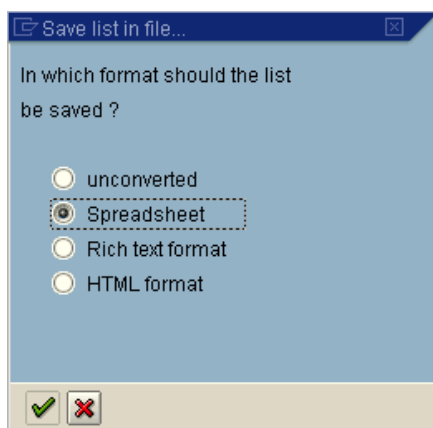
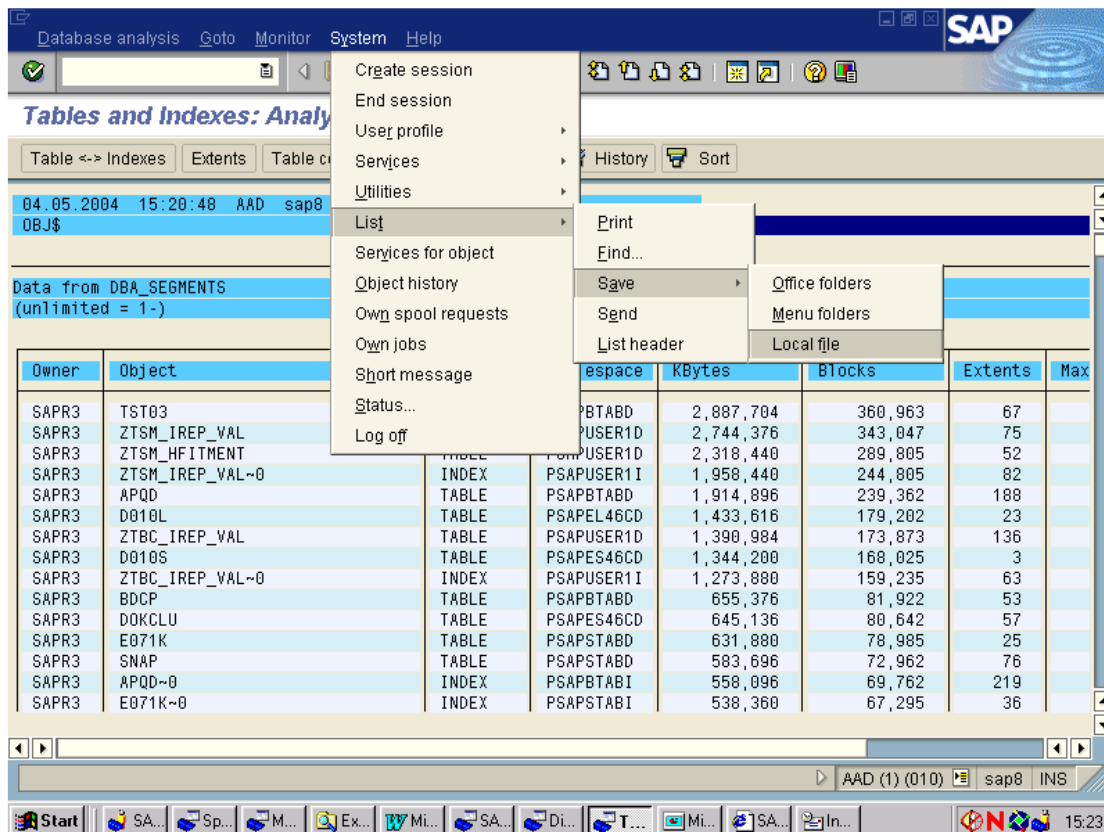
Owner	Object	Type	Tablespace	KBytes	Blocks	Extents	Max
SAPR3	TST03	TABLE	PSAPBTABD	2,887,704	360,963	67	
SAPR3	ZTSM_IREP_VAL	TABLE	PSAPUSER1D	2,744,376	343,047	75	
SAPR3	ZTSM_HFITMENT	TABLE	PSAPUSER1D	2,318,440	289,805	52	
SAPR3	ZTSM_IREP_VAL-0	INDEX	PSAPUSER1I	1,958,440	244,805	82	
SAPR3	APQD	TABLE	PSAPBTABD	1,914,896	239,362	108	
SAPR3	D010L	TABLE	PSAPEL46CD	1,433,616	179,202	23	
SAPR3	ZTBC_IREP_VAL	TABLE	PSAPUSER1D	1,390,984	173,873	136	
SAPR3	D010S	TABLE	PSAPES46CD	1,344,200	168,025	3	
SAPR3	ZTBC_IREP_VAL-0	INDEX	PSAPUSER1I	1,273,880	159,235	63	
SAPR3	BDCP	TABLE	PSAPBTABD	655,376	81,922	53	
SAPR3	DOKCLU	TABLE	PSAPES46CD	645,136	80,642	57	
SAPR3	E071K	TABLE	PSAPSTABD	631,880	78,985	25	
SAPR3	SNAP	TABLE	PSAPSTABD	583,696	72,962	76	
SAPR3	APQD-0	INDEX	PSAPBTABI	558,096	69,762	219	
SAPR3	E071K-0	INDEX	PSAPSTABI	538,360	67,295	36	

Start S... Sp... M... Ex... Mi... S... Di... T... Mi... S... In... 15:18

Next save the report into a spreadsheet by following Step2.

Step 2 – Export to Spreadsheet

Save the list to a local file via the System menu.

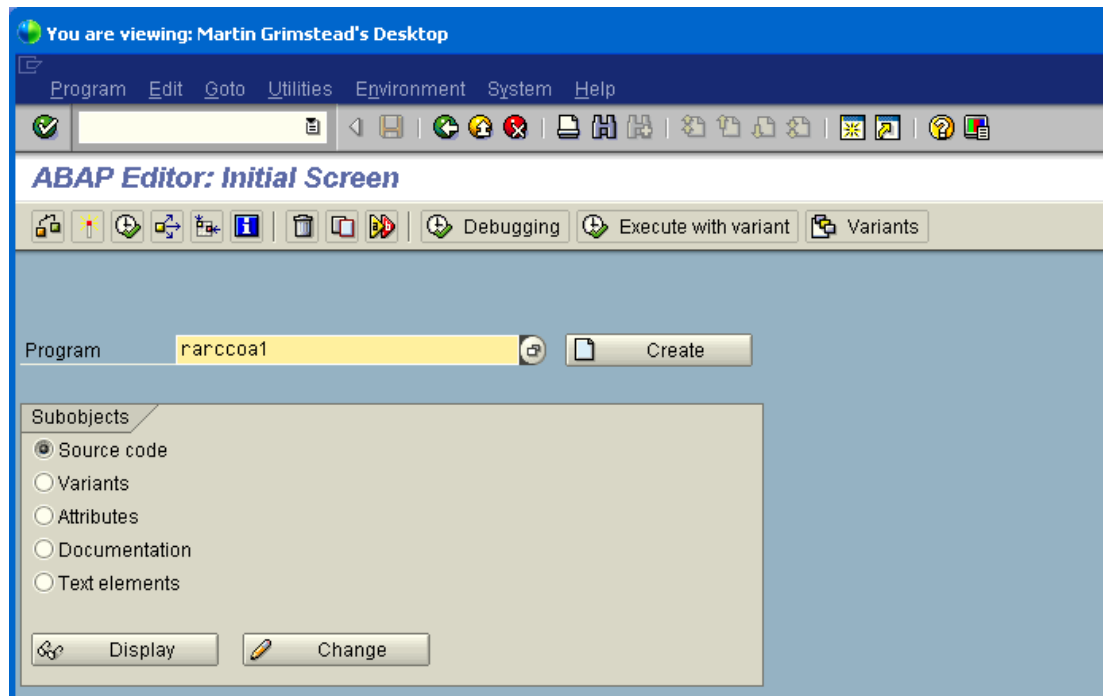


Then save the data to a local file. Make a note of the location of the file so you can find it to email to Macro 4.

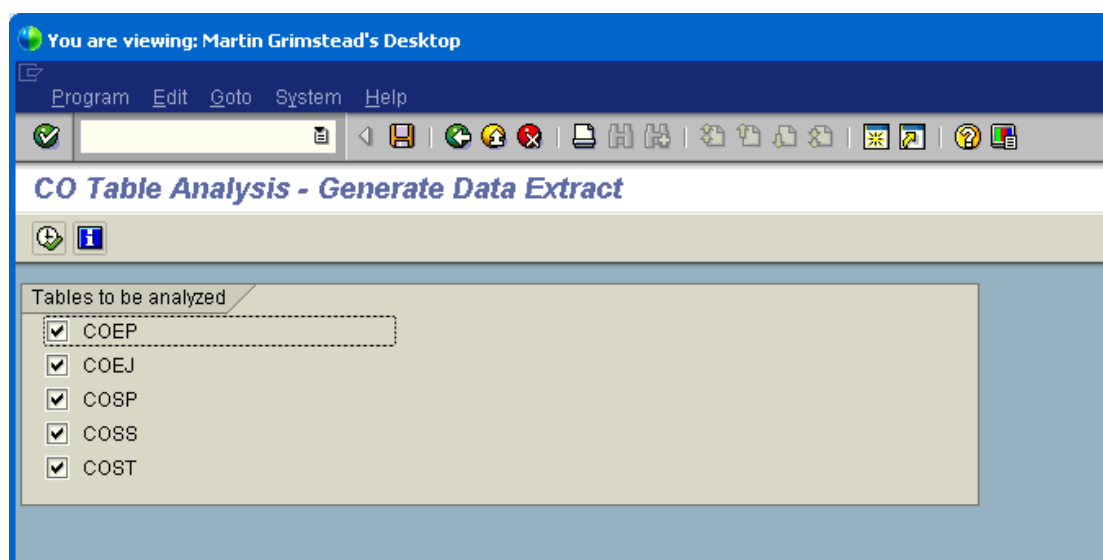
Step 3 – COEP table analysis

This procedure is designed to analyse the COEP table.

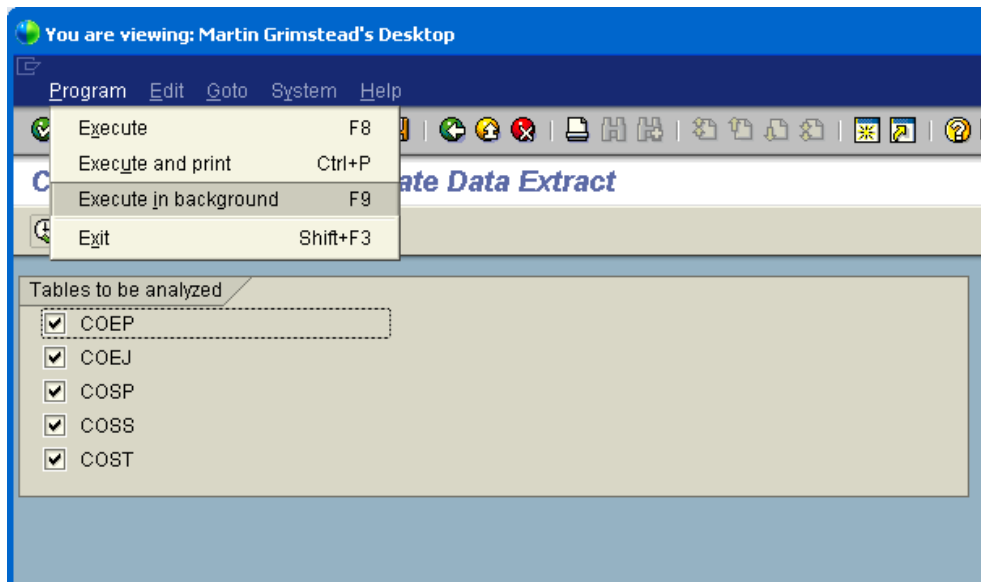
Run transaction SE38 and select report RARCCOA1.



Then please select all the boxes as shown below:

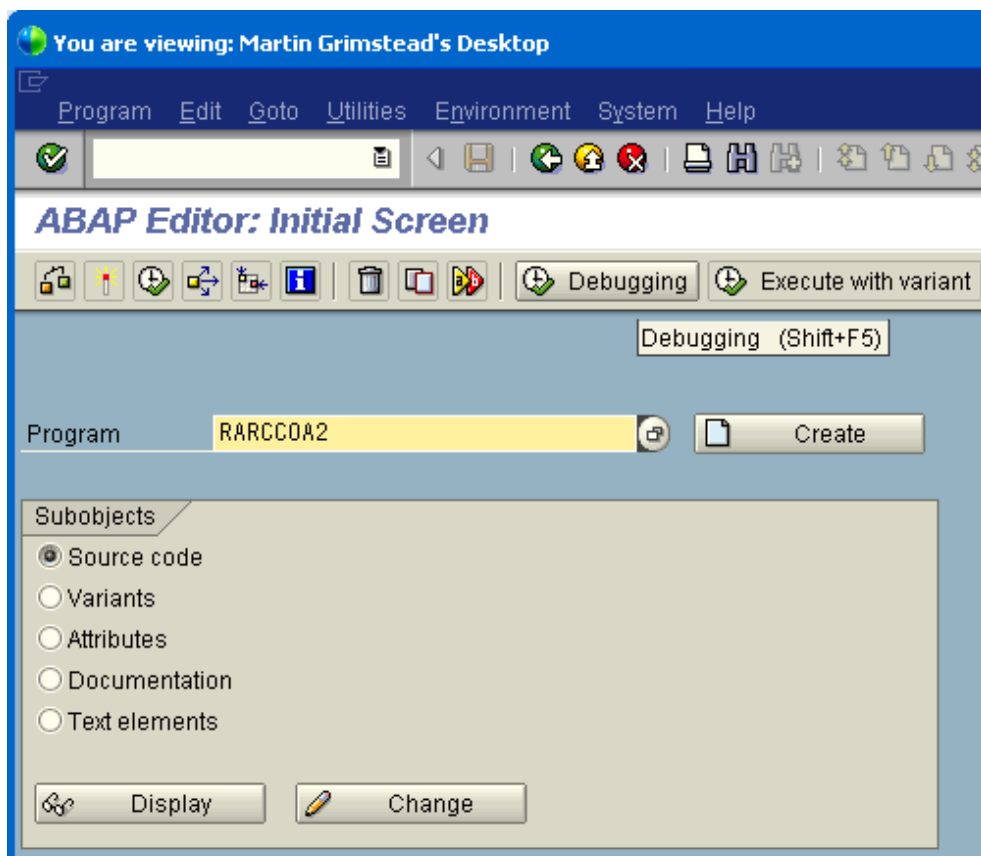


Ensure you execute in background. Do not print.



This might take a long time as it depends on the size of the SAP database.

Next run transaction SE38 with report RARCCOA2.



Output the results and open out the summary lines using the "+" boxes to give the year-by-year analysis shown below:

You are viewing: Martin Grimstead's Desktop

SHARING

SAP

CO Table Analysis - Display Data Extracts

System C11

Evaluation on 22.05.2007

Data extract generated from program RARCCO1

Data extract generated on 14.06.2005

Tables analyzed

COEP
COEJ
COSP
COSS
COST

RANK	Object	DTY	COAr	Year	ALL	COEP	COEJ	COSP	COSS	COST
1	PS_PROJECT	WBS	W001	1998	23,430	22,084	59	1,232	55	0
1	PS_PROJECT	WBS	W001	1999	10,877	8,961	178	1,299	439	0
1	PS_PROJECT	WBS	W001	1997	9,294	7,819	111	1,245	119	0
1	PS_PROJECT	WBS	W001	2003	8,785	8,293	7	470	15	0
1	PS_PROJECT	NWA	W001	1999	7,826	1,773	0	239	5,814	0
1	PS_PROJECT	NWA	W001	1998	5,708	800	0	343	4,565	0
1	PS_PROJECT	NWA	W001	1997	4,841	514	0	1,182	3,145	0
1	PS_PROJECT	WBS	W001	2000	4,148	3,551	19	560	18	0
1	PS_PROJECT	NWA	W001	2000	3,823	649	0	46	3,128	0
1	PS_PROJECT	WBS	W001	2001	2,400	1,638	4	636	122	0
1	PS_PROJECT	WBS	W001	2002	1,544	1,067	13	407	57	0
1	PS_PROJECT	NWA	W001	2001	1,495	273	0	52	1,170	0
1	PS_PROJECT	NWA	W001	2002	1,031	393	0	86	552	0
1	PS_PROJECT	NWA	W001	2003	1,016	419	0	90	507	0
1	PS_PROJECT	WBS	W001	2004	1,002	711	8	281	2	0
1	PS_PROJECT	NWA	W001	2004	802	197	0	98	507	0

Page: 2 of 2 Words: 14 English (U.S.)

start

3 Microsoft O... 2 Internet Ex... C:\Data\MY DO... You are viewin... Document3 - Mi... 14:06

Now follow the instructions in Step 2 to export these results to a spreadsheet.

Please email both spreadsheets to healthcheck@macro4.com or to your local contact at Macro 4.

THANK YOU